

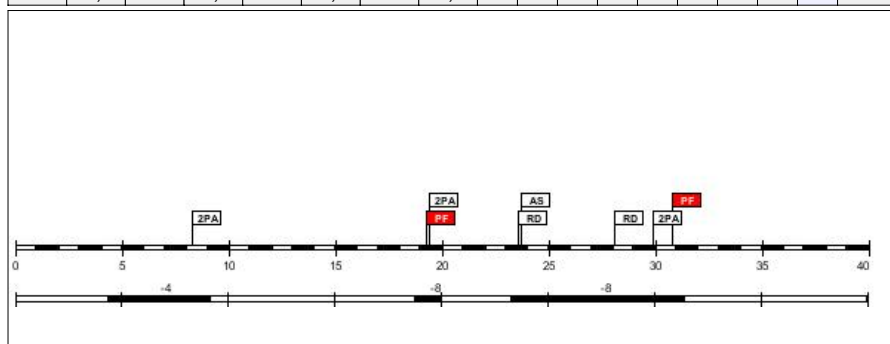
AUSWERTUNG DER SPIELER

48 - 70

(16-15, 13-18, 12-16, 7-21)

#4. Katharina Koprivali (TTV Neustadt)

FG		2P FG		3P FG		FW		Reb							PF		Pkt
G/V	%	G/V	%	G/V	%	G/V	%	RO	RD	Ge	AS	BV	BG	BL	C	D	
0/3	0,0	0/3	0,0	0/0	0,0	0/0	0,0	0	2	2	1	0	0	0	0	2	0

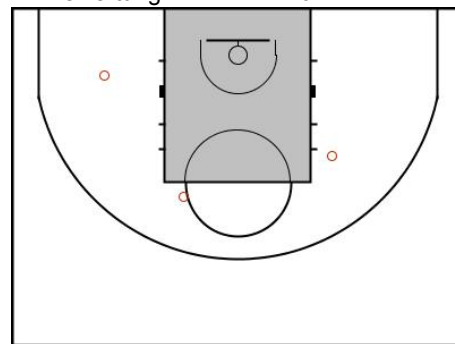


Guard; Alter: 16

Gespielte Zeit: **15:14**

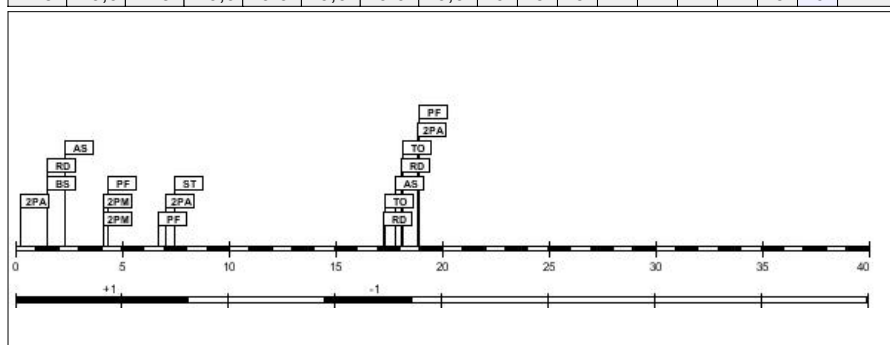
Punkte: **0**

+/- Bewertung: **-20**



#5. Caroline Popp (TTV Neustadt)

FG		2P FG		3P FG		FW		Reb							PF		Pkt
G/V	%	G/V	%	G/V	%	G/V	%	RO	RD	Ge	AS	BV	BG	BL	C	D	
2/5	40,0	2/5	40,0	0/0	0,0	0/0	0,0	0	3	3	2	2	1	1	3	0	4

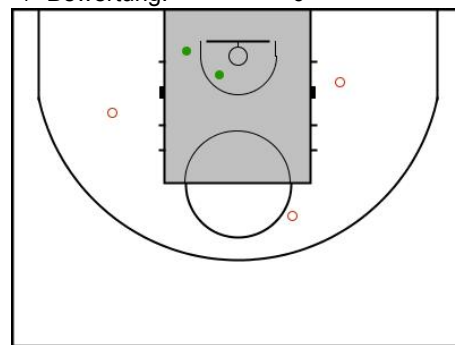


Guard; Alter: 32

Gespielte Zeit: **12:53**

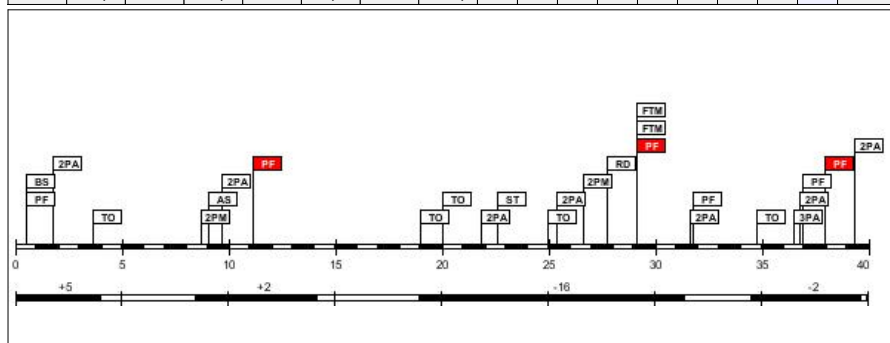
Punkte: **4**

+/- Bewertung: **+0**



#6. Theresa Winkelspecht (TTV Neustadt)

FG		2P FG		3P FG		FW		Reb							PF		Pkt
G/V	%	G/V	%	G/V	%	G/V	%	RO	RD	Ge	AS	BV	BG	BL	C	D	
2/10	20,0	2/9	22,2	0/1	0,0	2/2	100,0	0	1	1	1	5	1	1	3	3	6

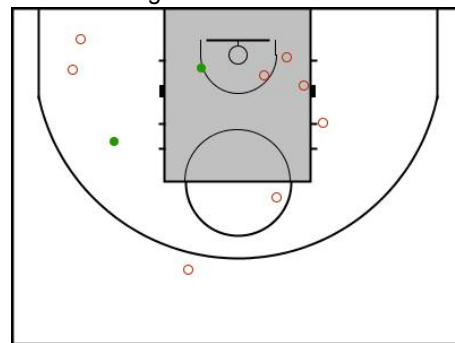


Guard; Alter: 16

Gespielte Zeit: **28:39**

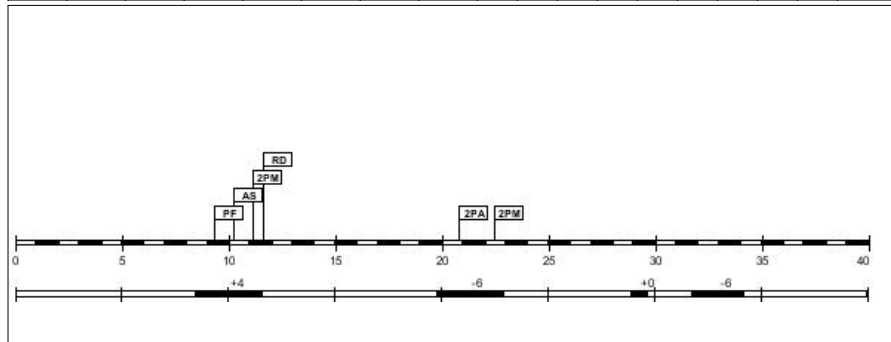
Punkte: **6**

+/- Bewertung: **-11**



#7. Eva Borrmann (TTV Neustadt)

FG		2P FG		3P FG		FW		Reb							PF		
G/V	%	G/V	%	G/V	%	G/V	%	RO	RD	Ge	AS	BV	BG	BL	C	D	Pkt
2/3	66,7	2/3	66,7	0/0	0,0	0/0	0,0	0	1	1	1	0	0	0	1	0	4

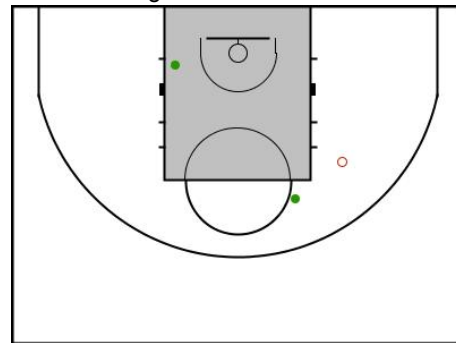


Forward; Alter: 15

Gespielte Zeit: 10:50

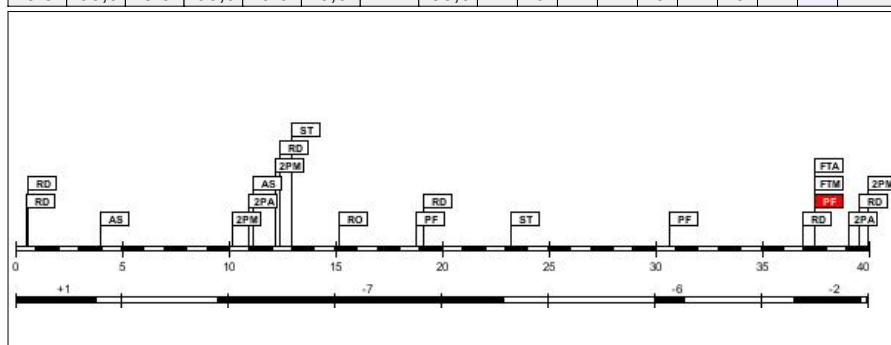
Punkte: 4

+/- Bewertung: -8



#8. Stephanie Arras (TTV Neustadt)

FG		2P FG		3P FG		FW		Reb							PF		
G/V	%	G/V	%	G/V	%	G/V	%	RO	RD	Ge	AS	BV	BG	BL	C	D	Pkt
3/5	60,0	3/5	60,0	0/0	0,0	1/2	50,0	1	6	7	2	0	2	0	2	1	7

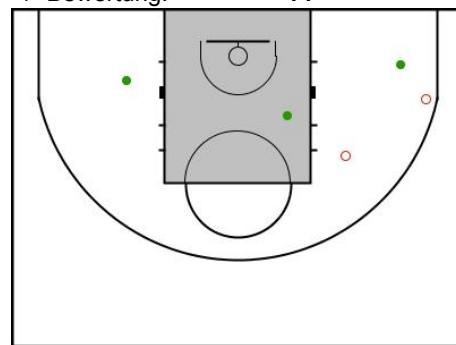


Forward; Alter: 27

Gespielte Zeit: 23:08

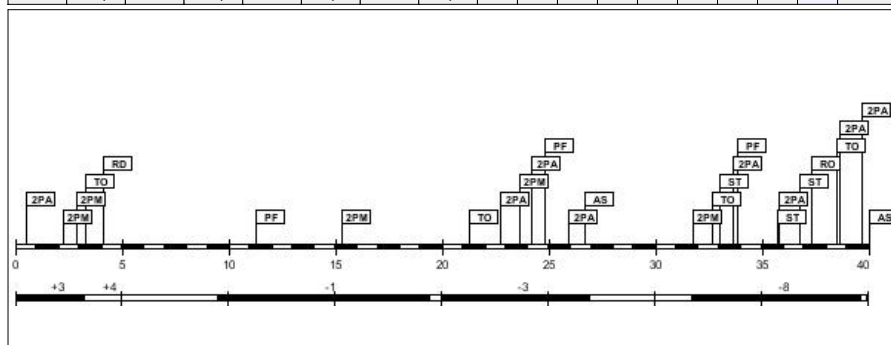
Punkte: 7

+/- Bewertung: -14



#9. Alena Liegl (TTV Neustadt)

FG		2P FG		3P FG		FW		Reb							PF		
G/V	%	G/V	%	G/V	%	G/V	%	RO	RD	Ge	AS	BV	BG	BL	C	D	Pkt
5/13	38,5	5/13	38,5	0/0	0,0	0/0	0,0	1	1	2	2	4	3	0	3	0	10

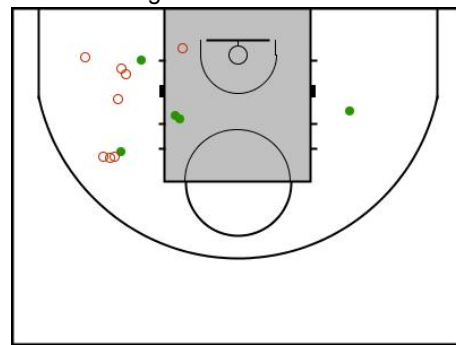


Guard; Alter: 30

Gespielte Zeit: 29:35

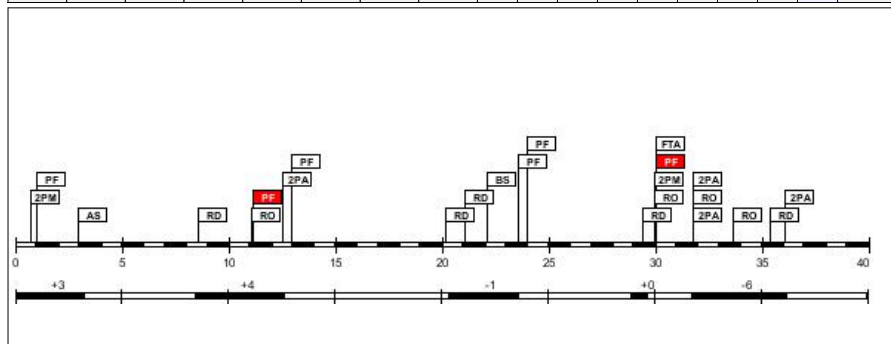
Punkte: 10

+/- Bewertung: -5



#10. Julia Richter (TTV Neustadt)

FG		2P FG		3P FG		FW		Reb							PF		
G/V	%	G/V	%	G/V	%	G/V	%	RO	RD	Ge	AS	BV	BG	BL	C	D	Pkt
2/6	33,3	2/6	33,3	0/0	0,0	0/1	0,0	4	5	9	1	0	0	1	4	2	4

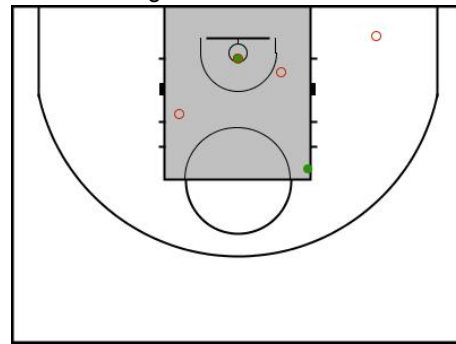


Center; Alter: 16

Gespielte Zeit: 17:35

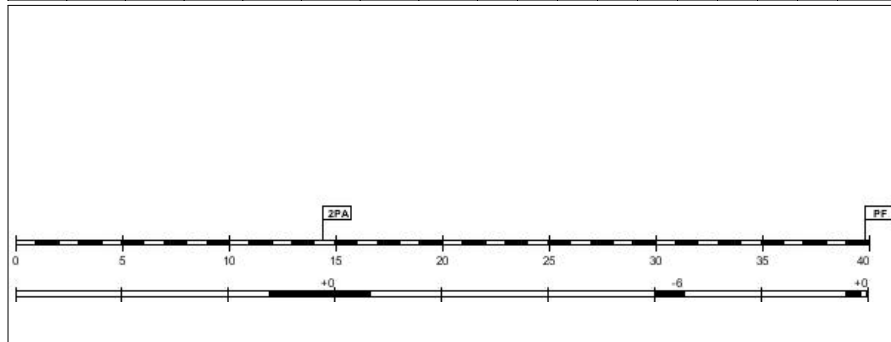
Punkte: 4

+/- Bewertung: +0



#11. Linda Winkelspecht (TTV Neustadt)

FG		2P FG		3P FG		FW		Reb							PF		
G/V	%	G/V	%	G/V	%	G/V	%	RO	RD	Ge	AS	BV	BG	BL	C	D	Pkt
0/1	0,0	0/1	0,0	0/0	0,0	0/0	0,0	0	0	0	0	0	0	0	1	0	0

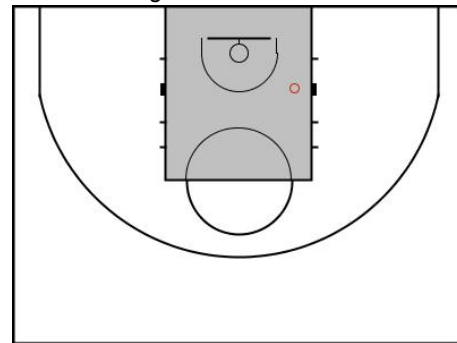


Center; Alter: 13

Gespielte Zeit: 07:57

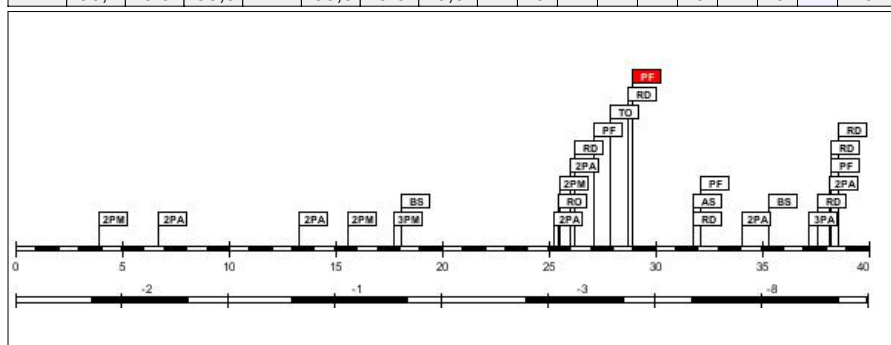
Punkte: 0

+/- Bewertung: -6



#12. Daniela Schorner (TTV Neustadt)

FG		2P FG		3P FG		FW		Reb							PF		
G/V	%	G/V	%	G/V	%	G/V	%	RO	RD	Ge	AS	BV	BG	BL	C	D	Pkt
4/11	36,4	3/9	33,3	1/2	50,0	0/0	0,0	1	6	7	1	1	0	2	3	1	9

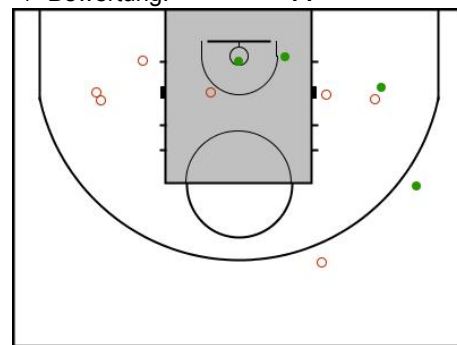


Forward; Alter: 21

Gespielte Zeit: 22:48

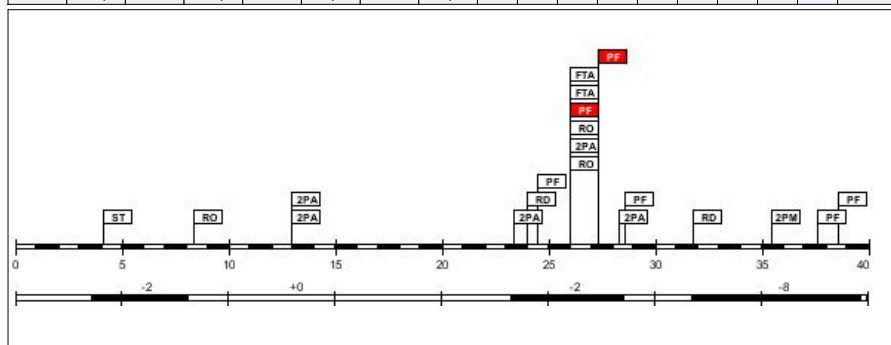
Punkte: 9

+/- Bewertung: -14



#13. Jana Hirsch (TTV Neustadt)

FG		2P FG		3P FG		FW		Reb							PF		
G/V	%	G/V	%	G/V	%	G/V	%	RO	RD	Ge	AS	BV	BG	BL	C	D	Pkt
1/6	16,7	1/6	16,7	0/0	0,0	0/2	0,0	3	2	5	0	0	1	0	4	2	2

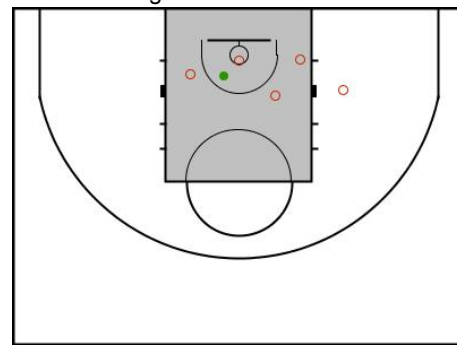


Forward; Alter: 18

Gespielte Zeit: 18:44

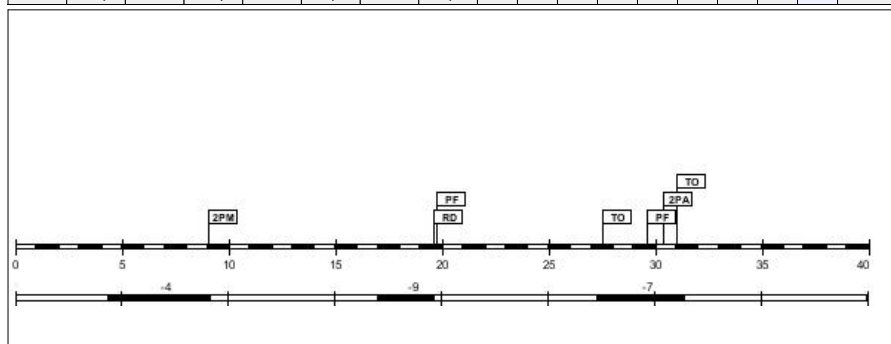
Punkte: 2

+/- Bewertung: -12



#15. Lara Klier (TTV Neustadt)

FG		2P FG		3P FG		FW		Reb							PF		
G/V	%	G/V	%	G/V	%	G/V	%	RO	RD	Ge	AS	BV	BG	BL	C	D	Pkt
1/2	50,0	1/2	50,0	0/0	0,0	0/0	0,0	0	1	1	0	2	0	0	2	0	2

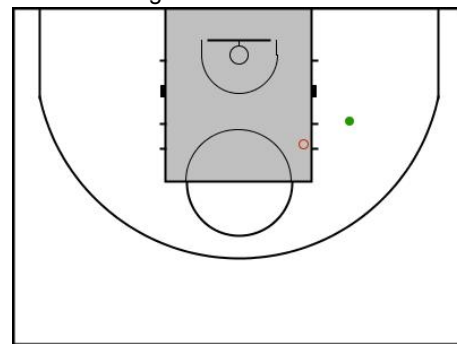


Forward; Alter: 20

Gespielte Zeit: 12:37

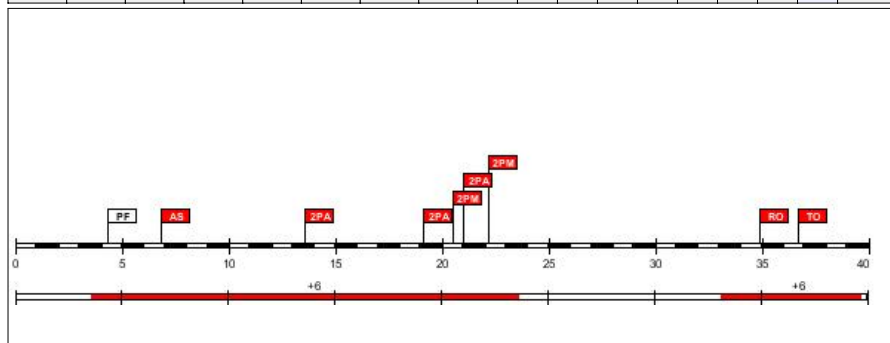
Punkte: 2

+/- Bewertung: -20

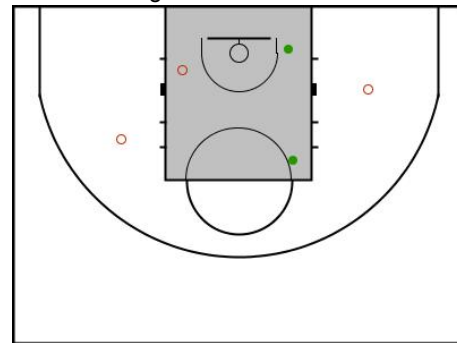


#4. Aline Suchantke (TuSpo Heroldsberg)

FG		2P FG		3P FG		FW		Reb							PF		
G/V	%	G/V	%	G/V	%	G/V	%	RO	RD	Ge	AS	BV	BG	BL	C	D	Pkt
2/5	40.0	2/5	40.0	0/0	0.0	0/0	0.0	1	0	1	1	1	0	0	0	1	4

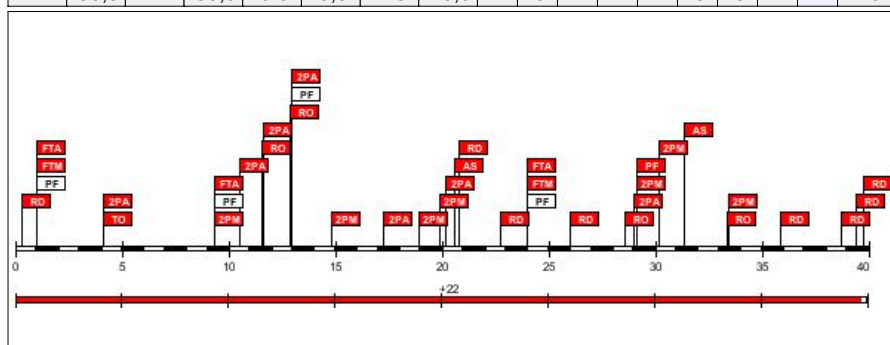


Gespielte Zeit: **27:15**
Punkte: **4**
+/- Bewertung: **+12**

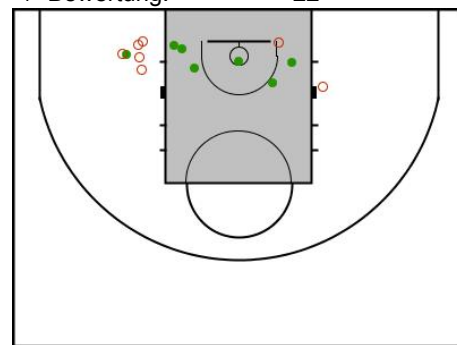


#5. Sandra Kohlmann (TuSpo Heroldsberg)

FG		2P FG		3P FG		FW		Reb							PF		
G/V	%	G/V	%	G/V	%	G/V	%	RO	RD	Ge	AS	BV	BG	BL	C	D	Pkt
7/14	50.0	7/14	50.0	0/0	0.0	2/5	40.0	4	8	12	2	1	0	0	1	4	16

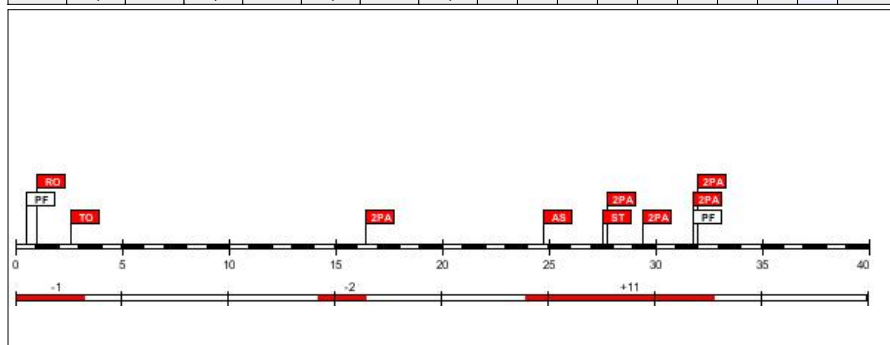


Gespielte Zeit: **40:00**
Punkte: **16**
+/- Bewertung: **+22**

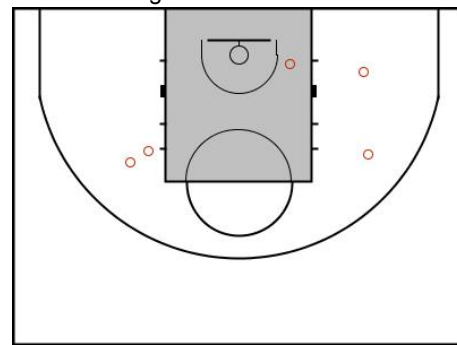


#7. Vanessa Geiger (TuSpo Heroldsberg)

FG		2P FG		3P FG		FW		Reb							PF		
G/V	%	G/V	%	G/V	%	G/V	%	RO	RD	Ge	AS	BV	BG	BL	C	D	Pkt
0/5	0.0	0/5	0.0	0/0	0.0	0/0	0.0	1	0	1	1	1	1	0	0	2	0

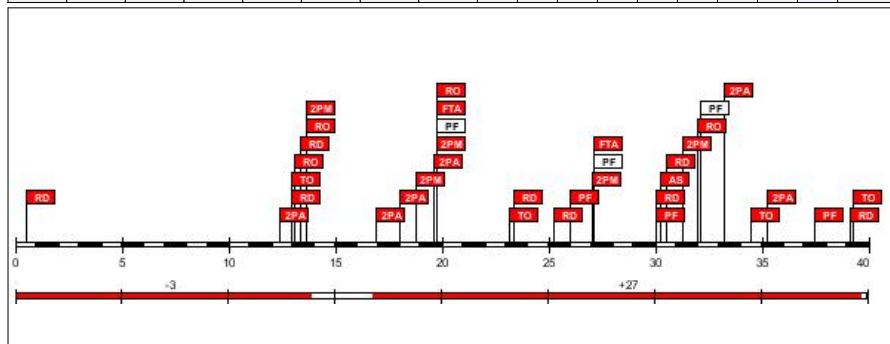


Gespielte Zeit: **15:21**
Punkte: **0**
+/- Bewertung: **+8**

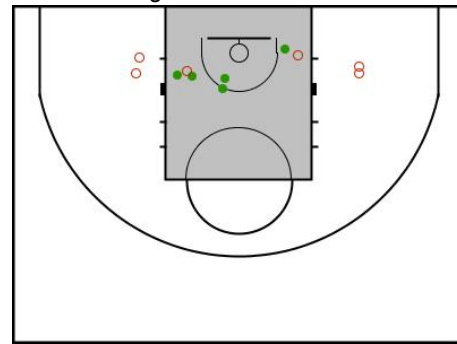


#9. Franziska Müller (TuSpo Heroldsberg)

FG		2P FG		3P FG		FW		Reb			AS	BV	BG	BL	PF		Pkt
G/V	%	G/V	%	G/V	%	G/V	%	RO	RD	Ge					C	D	
5/11	45.5	5/11	45.5	0/0	0.0	0/2	0.0	4	8	12	1	4	0	0	3	3	10

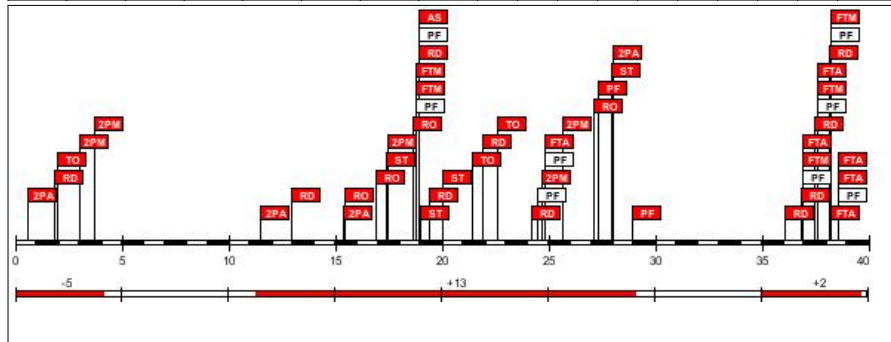


Gespielte Zeit: **37:24**
Punkte: **10**
+/- Bewertung: **+24**

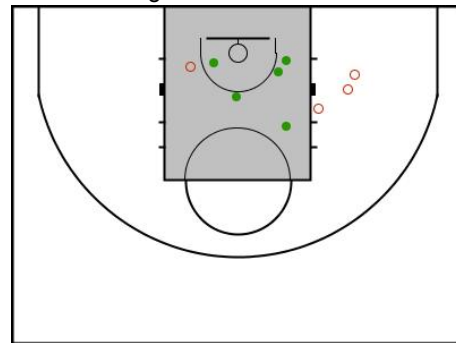


#12. Miriam Selzle (TuSpo Heroldsberg)

FG		2P FG		3P FG		FW		Reb							PF		
G/V	%	G/V	%	G/V	%	G/V	%	RO	RD	Ge	AS	BV	BG	BL	C	D	Pkt
5/9	55,6	5/9	55,6	0/0	0,0	5/11	45,5	4	10	14	1	3	4	0	2	8	15

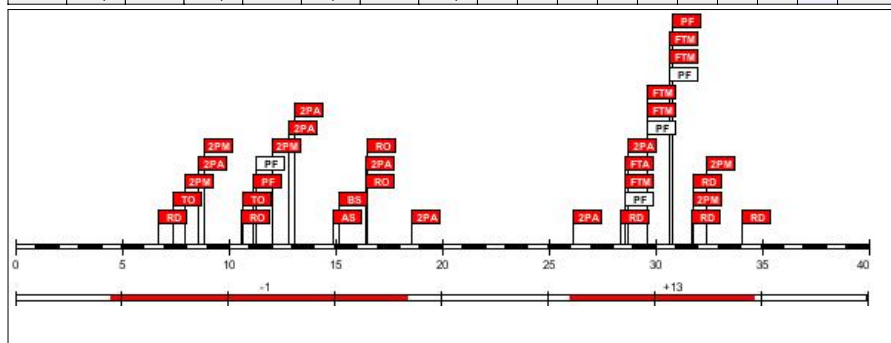


Gespielte Zeit: **27:35**
Punkte: **15**
+/- Bewertung: **+10**

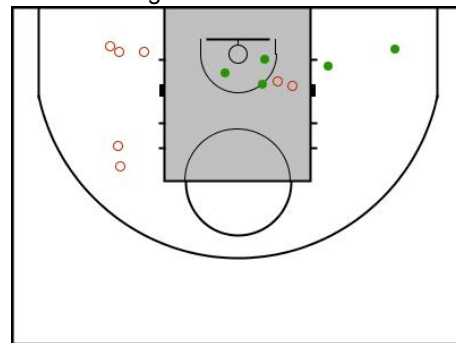


#13. Elisabeth Straube (TuSpo Heroldsberg)

FG		2P FG		3P FG		FW		Reb							PF		
G/V	%	G/V	%	G/V	%	G/V	%	RO	RD	Ge	AS	BV	BG	BL	C	D	Pkt
5/12	41,7	5/12	41,7	0/0	0,0	5/6	83,3	3	5	8	1	2	0	1	2	4	15

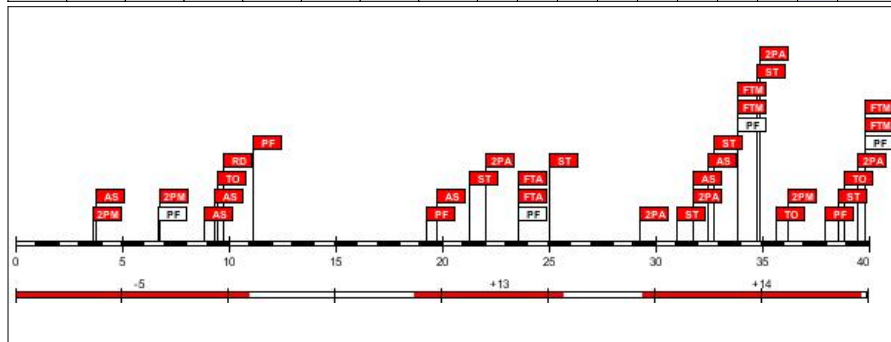


Gespielte Zeit: **23:19**
Punkte: **15**
+/- Bewertung: **+12**



#14. Sonja Wucher (TuSpo Heroldsberg)

FG		2P FG		3P FG		FW		Reb							PF		
G/V	%	G/V	%	G/V	%	G/V	%	RO	RD	Ge	AS	BV	BG	BL	C	D	Pkt
3/8	37,5	3/8	37,5	0/0	0,0	4/6	66,7	0	1	1	6	3	6	0	3	4	10



Gespielte Zeit: **29:06**
Punkte: **10**
+/- Bewertung: **+22**

